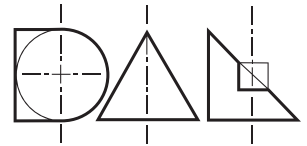


M FLUX M4 - SUMMARY

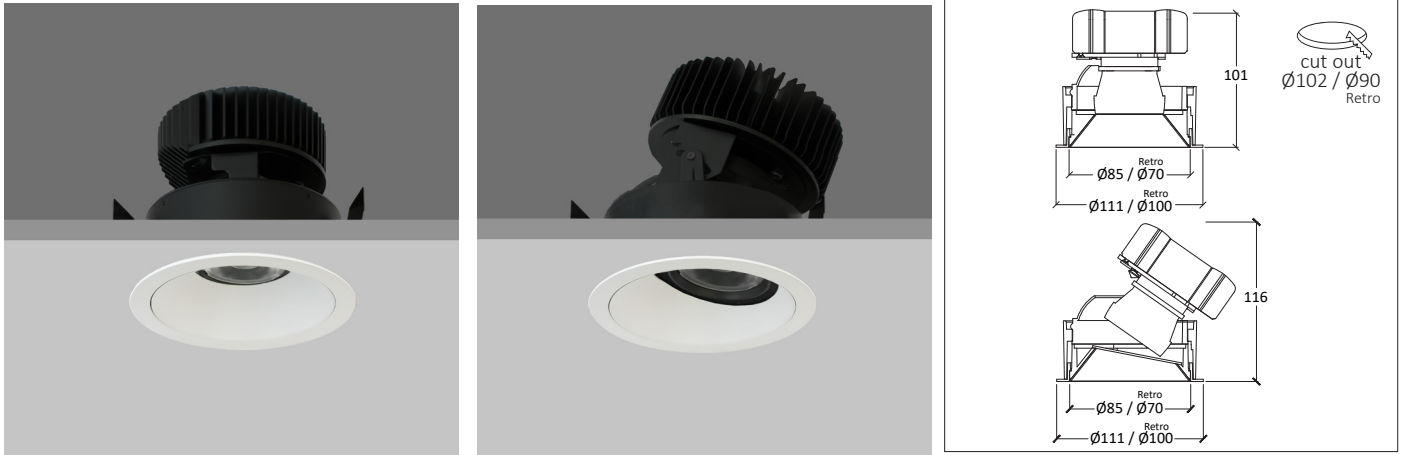


M-FLUX M4 FIXED/DIRECTIONAL Round recessed downlighter with standard white ceiling trim and a choice of deep cone reflector finish and beam distribution. The high-quality precision lens and deep cone aluminium reflector gives visual comfort. Driver mounted remotely.

The M-FLUX M4 is easy to install and incorporates the latest, high efficiency LED technology. Colour consistency through life is ensured by state-of-the-art components and passive cooling aluminium heat sinks.

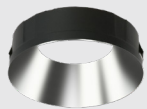
Standard colour temperatures: 2700K, 3000K, 4000K, colour rendering Ra>90 2-step Macadam are all available. Life 50000 hours.

A choice of drivers provide fixed supply or dimming to project requirements. IP20/IP44/IP54 durable, high specification die-cast construction.



LED	Beam Angle	Lumen Source	LED W	CCT	CRI	Macadam	IP Rating
Ultra Narrow Module	10°	700 lm	6W	2700K, 3000K, 4000K	>90	2 step	IP20, IP44, IP54
Narrow Module	13°	1300 lm 1600 lm 1700 lm 2000 lm	11W 15W 16W 20W	2700K, 3000K, 4000K	>90	2 step	IP20, IP44, IP54
Standard Module	19°, 25°, 40°, 55°	1500 lm 1700 lm 1900 lm 2100 lm 2700 lm 3300 lm	11W 13W 15W 17W 24W 33W	2700K, 3000K, 4000K	>90	2 step	IP20, IP44, IP54

Standard Reflector Finishes



Specular Silver



Satin Silver



Black



White



Gold

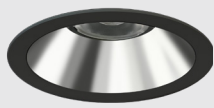


Bronze

Trim Finish



White

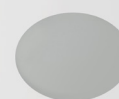


Black

Accessories



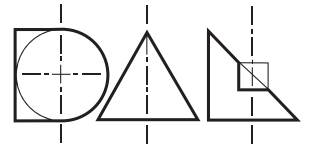
Honeycomb Louvre



Elliptical Film



Sandblasted Glass



Fixed Round



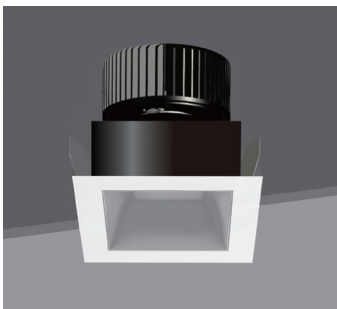
Directional Round



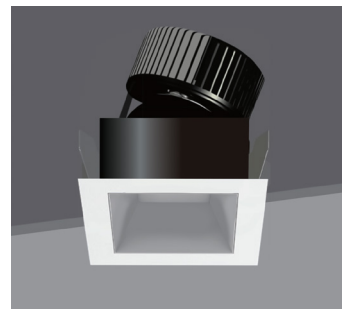
Wallwasher Round



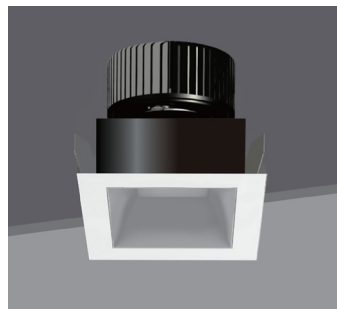
Trimless Round



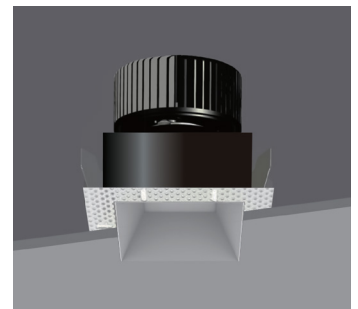
Fixed Square



Directional Square



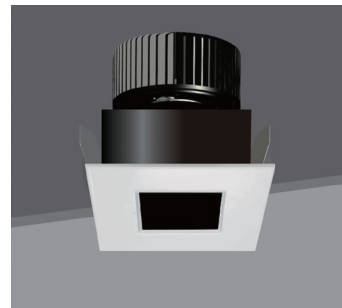
Wallwasher Square



Trimless Square



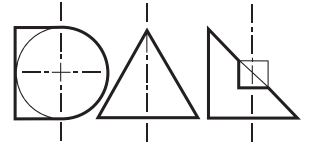
Pinhole Round



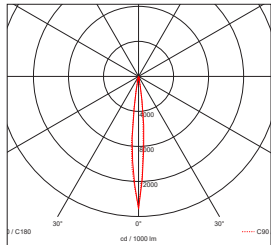
Pinhole Square

PRODUCT CODING EXAMPLE: M4F3133J350R320

Series	Type	Distribution	Reflector Colour	Initial Lumens	LED	Colour Temp	Driver Protocol	Emergency Protocol	Shape	Trim Colour	IP	Accessories	
M4	F FIXED	1 1-10°	1 SPECULAR SILVER	07 700 lm	J CREE	2 2700K	0 NON DIM	0 NONE	R ROUND	L Trimless	2 IP20	0 NONE	
	A ADJUSTABLE	2 11-20°	2 SATIN SILVER	20 2000 lm	CRI >90	3 3000K	1 1-10V	E EMERGENCY	S SQUARE	3 Black	4 IP44	1 HONEYCOMB	
	S SINGLE	3 21-30°	3 BLACK	27 2700 lm	2 STEPS	5 4000K	5 DALI			4 White	5 IP54	2 ELLIPTICAL FILM	
	D DOUBLE	4 31-40°	4 WHITE	33 3300 lm etc			7 LEAD / TRAIL					3 FROSTED GLASS	
	WALLWASH	5 41-50°	5 GOLD				8 CASAMBI						
		6 51-60°	6 BRONZE				9 ADDRESSABLE (EMERGENCY)						
	7 COPPER												
M4	F	3	1	31	J	3	5	0	R	3	2	0	

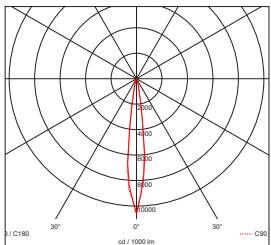


LED	Beam Angle	Lumen Source	Delivered Lumens	LOR	Luminous Intensity	Current	Forward Voltage	LED W	CRI	Macadam
Ultra Narrow Module	10°	700 lm	533 lm	≤ 76%	10620 cd	700mA	9.3V	6W	>90	2 step



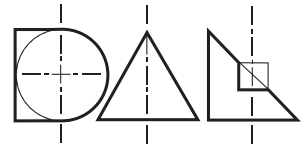
10°		700 lm	
1	0.18		10618
2	0.35		2655
3	0.53		1180
4	0.71		664
5	0.88		425
H(m)	Dia (m)	E(lx)	

LED	Beam Angle	Lumen Source	Delivered Lumens	LOR	Luminous Intensity	Current	Forward Voltage	LED W	CRI	Macadam
Narrow Module	13°	1300 lm	1053 lm	≤ 86%	13803 cd	350mA	33.9V	11W	>90	2 step
		1600 lm	1321 lm		17311 cd	450mA	33.3V	15W		
		1700 lm	1462 lm		19123 cd	500mA	33.5V	16W		
		2000 lm	1700 lm		22322 cd	600mA	33.9V	20W		

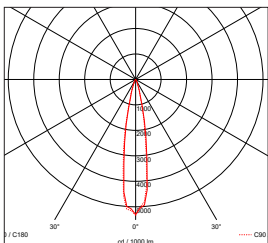


13°		1300 lm	1600 lm	1700 lm	2000 lm
1	0.23	13799	17303	19114	22312
2	0.46	3450	4326	4778	5578
3	0.69	1533	1923	2124	2479
4	0.92	863	1081	1195	1395
5	1.15	552	692	765	893
H(m)	Dia (m)	E(lx)	E(lx)	E(lx)	E(lx)

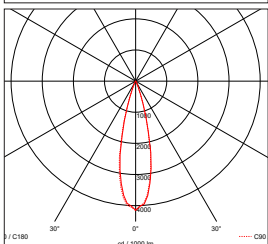
- (1) Height subject to the power module.
- (2) Electrical Data based on 90CRI, 3000K, Tc=85°C.
- (3) Tolerance range for optical and electrical data: ±10%.



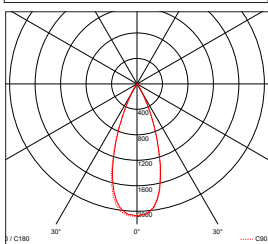
LED	Beam Angle	Lumen Source	Delivered Lumens	LOR	Luminous Intensity	Current	Forward Voltage	LED W	CRI	Macadam
Standard Module	19°	1500 lm	1156 lm	≤ 77%	7994 cd	350mA	33.3V	11W	>90	2 step
		1700 lm	1276 lm		8777 cd	400mA	33.7V	13W		
		1900 lm	1430 lm		9861 cd	450mA	34.0V	15W		
		2100 lm	1584 lm		10928 cd	500mA	34.3V	17W		
		2700 lm	2038 lm		14089 cd	700mA	35.6V	24W		
		3300 lm	2495 lm		17226 cd	900mA	36.6V	33W		
	25°	1500 lm	1312 lm	≤ 88%	6233 cd	350mA	33.3V	11W	>90	2 step
		1700 lm	1453 lm		6898 cd	400mA	33.7V	13W		
		1900 lm	1630 lm		7738 cd	450mA	34.0V	15W		
		2100 lm	1808 lm		8576 cd	500mA	34.3V	17W		
		2700 lm	2327 lm		11058 cd	700mA	35.6V	24W		
		3300 lm	2835 lm		13472 cd	900mA	36.6V	33W		
	40°	1500 lm	1317 lm	≤ 87%	3130 cd	350mA	33.3V	11W	>90	2 step
		1700 lm	1457 lm		3452 cd	400mA	33.7V	13W		
		1900 lm	1636 lm		3875 cd	450mA	34.0V	15W		
		2100 lm	1814 lm		4295 cd	500mA	34.3V	17W		
		2700 lm	2337 lm		5541 cd	700mA	35.6V	24W		
		3300 lm	2858 lm		6776 cd	900mA	36.6V	33W		
	55°	1500 lm	1225 lm	≤ 83%	1695 cd	350mA	33.3V	11W	>90	2 step
		1700 lm	1377 lm		1902 cd	400mA	33.7V	13W		
		1900 lm	1559 lm		2153 cd	450mA	34.0V	15W		
		2100 lm	1736 lm		2397 cd	500mA	34.3V	17W		
		2700 lm	2240 lm		3094 cd	700mA	35.6V	24W		
		3300 lm	2745 lm		3803 cd	900mA	36.6V	33W		



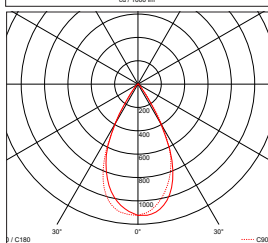
19°		1500 lm	1700 lm	1900 lm	2100 lm	2700 lm	3300 lm
1	0.34	7994	8773	9856	10923	14083	17218
2	0.67	1998	2193	2464	2731	3521	4305
3	1.01	888	975	1095	1214	1565	1913
4	1.34	500	548	616	683	880	1076
5	1.68	320	351	394	437	563	689
H(m)	Dia (m)	E(lx)	E(lx)	E(lx)	E(lx)	E(lx)	E(lx)



25°		1500 lm	1700 lm	1900 lm	2100 lm	2700 lm	3300 lm
1	0.46	6233	6898	7738	8576	11058	13472
2	0.91	1558	1725	1934	2144	2765	3368
3	1.37	693	767	860	953	1229	1497
4	1.83	390	431	484	536	691	842
5	2.28	250	276	310	343	442	539
H(m)	Dia (m)	E(lx)	E(lx)	E(lx)	E(lx)	E(lx)	E(lx)



40°		1500 lm	1700 lm	1900 lm	2100 lm	2700 lm	3300 lm
1	0.69	3128	3451	3873	4294	5539	6773
2	1.38	782	863	969	1073	1385	1693
3	2.07	348	383	431	477	615	753
4	2.76	196	216	242	268	346	424
5	3.45	125	138	155	172	222	271
H(m)	Dia (m)	E(lx)	E(lx)	E(lx)	E(lx)	E(lx)	E(lx)



55°		1500 lm	1700 lm	1900 lm	2100 lm	2700 lm	3300 lm
1	1.01	1693	1901	2152	2395	3092	3802
2	2.01	424	476	538	599	773	951
3	3.02	188	211	239	266	344	423
4	4.03	106	119	135	150	194	238
5	5.04	68	76	86	96	124	152
H(m)	Dia (m)	E(lx)	E(lx)	E(lx)	E(lx)	E(lx)	E(lx)